

FREE! Please take a copy

C  
R  
O  
S  
S  
  
A  
L  
K



**Lillington Parish Church  
St Mary Magdalene's  
Magazine**

**APRIL 2024**

## From the Vicar

If you woke up this morning with more health than illness... you are more blessed than the million who will not survive this week. If you have never experienced the danger of battle, the loneliness of imprisonment, the agony of torture, or the pangs of starvation... you are ahead of 500 million people in the world. If you can attend a church meeting without fear of harassment, arrest, torture, or death... you are more blessed than three billion people in the world.



If you have food in the refrigerator, clothes on your back, a roof overhead and a place to sleep...you are richer than 75% of this world. If you have money in the bank, in your wallet, and spare change in a dish someplace... you are among the top 8% of the world's wealthy.

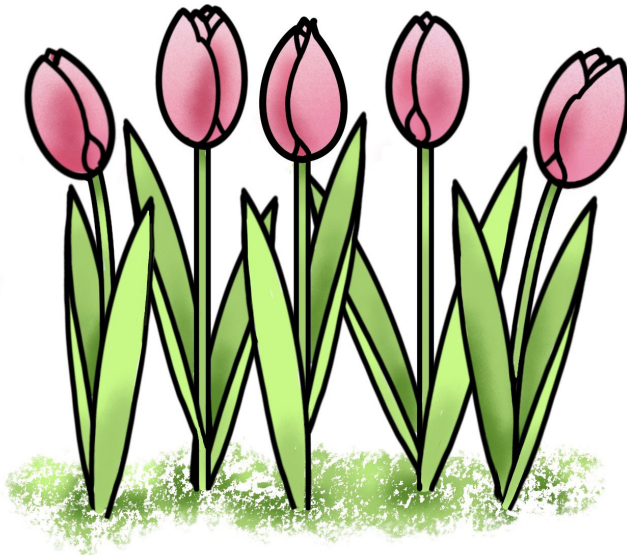
If you hold up your head with a smile on your face and are truly thankful... you are blessed because the majority can, but most do not. If you can hold someone's hand, hug them or even touch them on the shoulder...you are blessed because you can offer God's healing touch. If you prayed yesterday and today... you are in the minority because you believe God does hear and answer prayers. If you can read this message you are more blessed than over two billion people in the world

that cannot read at all.

April is a beautiful month when all around us is beginning to burst with new life. Each day is a wonderful gift and times of worship - wherever this may take place - are simply our recognition that we have been given so much. A saying I heard as a child goes like this: "I cried because I had no shoes, until I met a man who had no feet." Some will have more than us but many will have less. As people of faith, we are encouraged to have the sort of perspective on the world that helps us to know that we are truly blessed.

With every blessing,

**William**



# **Annual Meeting**

**14<sup>th</sup> April 2024**

The meeting will begin at 10.15am  
after a shortened 9.30am Communion.



Each year we hold a special meeting which is open to all.

During this meeting reports are received  
on all the activities during the previous year.

These reports will come out in advance in magazine format  
but will also up-date the church membership  
and present the church accounts.

We will also elect our Church Wardens  
and new members to the Parochial Church Council

Do come along and be part of celebrating the mission and ministry  
of Lillington Parish Church.



**C.L.E.A.N  
ARTY-FOLKS**

**AND  
LEAMINGTON SKY GARDEN  
*presents....***

# **10,000 SUNFLOWERS**

join us in our ambitious project to get lillington  
and cubbington growing thousands of sunflowers.  
**we need**



- \* Greenhouses and polytunnels**
- \* Potting compost**
- \* Gardens and Green Spaces**
- \* Volunteers**



Website and contacts : [leamingtonskygarden.uk](http://leamingtonskygarden.uk)  
[hello@leamingtonskygarden.uk](mailto:hello@leamingtonskygarden.uk)



[matt.black@pop3.poptel.org.uk](mailto:matt.black@pop3.poptel.org.uk)  
**07765 684941**



Leamington  
skygarden.uk

# 10,000 Sunflowers

This winter I had the pleasure of getting to know a local poet called Matt Black who told me about an exciting project he has devised called 10,000 Sunflowers. Matt is heading up a local group called Cubbington and Lillington Environmental Action Now (C.L.E.A.N.), and the idea behind the project is to get as many residents and community groups as possible to come together to pot up sunflower seeds, and nurture them on until large enough to plant out in gardens or shared community spaces.

There are two strands of the project and the first has been to hunt down suitable spaces, such as unused polytunnels and greenhouses ,where we would be able to gather people together to enjoy a communal potting up session in one space. This is still ongoing as we have a number of suitable offers but not enough yet to reach our goal. The second strand is to ask local residents and groups to raise a tray or two of sunflowers themselves from the pots and seeds which we will provide. If you think you have space for a tray of 18 pots then please do contact either myself or Matt and we will add you to the list. We will provide the pots, trays and seeds but would ask that you provide the compost.

Once the plants are robust enough to handle we will be collecting them together to create some mass planted areas in the neighbourhood and in any front gardens where people would like them.

We hope to make these social events where various growers can come together, enjoy the communal activity and also make a green, colourful, bee friendly difference to the area.

If that's not exciting enough - also helping to give the project an artistic element are Arty-Folks, a community-based group who have been tasked with creating arts events in Lillington. They will be running workshops alongside the horticultural element of the project. Once I know what these will be I will post another article in Crosstalk.

## **How to help and get involved**

Do you know of a suitable unused polytunnel or large greenhouse we could use?

Alternatively are you able to 'adopt' a tray of pots, grow them on and together with us plant them out?

If you have a 2ft x 1ft space in a greenhouse, cold frame or bright unheated porch you could be the proud foster parents of 18 infant seedlings awaiting new homes!

Please email myself: snattd@gmail.com or Matt: matt.black@pop3.poptel.org.uk or mob: Matt on 07765684941

**Potting Up Days – with tea and cake. Venue TBC**  
April 13th / 14th and 20th / 21st (Saturdays, Sundays)

**Planting Out Days**  
June 1st / 2nd and 8th / 9th (Saturdays, Sundays)

**CLEAN Arts event and Sunflowers Celebration - Lillington Club, Lime Avenue**  
June 15th: 2pm till 10pm

David Snatt

# A Thank You Note

Dear friends of St Mary Magdalene Church,

I would like to say a sincere thank you for the kind gift and card given to me on Sunday 28th during the service.

It has been a great pleasure to decorate the church over the years, especially at festival times, weddings, and memorial of anniversary flowers.

My family moved from Worcester to Lillington in 1948 when it was a tiny village surrounded by fields. I have completed many duties within one church over the years and now time has caught up.

Thank you for all your support and my prayers go to Rachel Duff who has kindly taken over. A special thanks to all the ladies on the Flower Guild past and present, team work is so special.

Kind regards,

Wendy Shear



You are invited to join us for a

# *Bluebell Walk*



**RYTON POOLS COUNTRY PARK**  
**Bubbenhall CV8 3BG**

**Saturday 27th April at 10.30 am**  
at the main car park

For a leisurely walk round the Country Park to appreciate both the flora and fauna of this time of year, and provided the season is typical, the glorious show of bluebells

Afterwards bring a picnic or make use of the refreshment facilities available at the Park

**There is a car parking charge**

**For more information contact Pat Poulson on 07919  
518 174**



# Saturday Coffee Mornings Recipes

## Cheese Scones

Makes 12

*Carol Innes regularly makes scones for Coffee mornings. For sweet scones Delia Smit's recipe is always a good standby. But this month its a basic cheese scone recipe.*

### Ingredients

450g strong white flour  
5 tsp baking powder  
Pinch of salt  
100g butter, diced and cold

300ml full fat milk  
150g grated cheddar  
1 egg  
1 egg yolk for egg wash

### Method

1. Pre heat the oven to 220c.
2. For the scones, mix the flour and baking powder. Add the butter and using your fingertips rub in until it resembles breadcrumbs (or use a food processor). Add the milk, egg and cheese and mix until you have a soft dough. Handle as little as possible.
3. Roll out on a lightly floured surface until 2 cm thick. Cut out using a 7cm cutter – press the cutter down and lift – do not twist or the scones will be lopsided. Re-roll, and you will get 12 scones. Beat the egg yolk and brush over the scones, sprinkle with a little extra grated cheese.
4. Bake for 10 to 12 minutes, allow to cool slightly then split and butter.

### Tips

- These scones freeze beautifully, and can be easily defrosted in the microwave.
- Substitute cheddar with other cheese (brie and walnut works well)
- Herbs can be added with the flour/butter mix for different flavours

(adapted from James Martin Masterclass)

**Carol Innes**





A date for your diaries...

# BELL SUNDAY

Come to the 11.15am All-Age Service on Sunday 12th May to find out more about our lovely bells and how we ring them.

There will be a chance to ring hand-bells and to go up to the ringing chamber to chime a bell (with help if necessary and supervision!)

Bell biscuits will be served beforehand to give you enough energy!  
Do ask Roger or Barbara Howes ([barohowes@gmail.com](mailto:barohowes@gmail.com)) for more details. We look forward to worshipping and ringing together!

# A holiday adventure!

On my recent holiday to India with my friend Amanda, we found ourselves appearing in a local newspaper as minor celebrities.

We stayed with a lovely family in an Airbnb in a village in Kerala called Vithura. Whilst there, the family invited us to join them in the celebration of the Hindu festival, Pongal – our host



With our lovely hosts at the beautiful home in Vithura, Kerala

was a member of the temple committee. Pongal is a harvest festival which usually falls in mid-January and is a ‘celebration of abundance, togetherness, and the blessings of the sun god’. The highlight of the festival is the traditional dish, also called Pongal, prepared by boiling rice with milk and jaggery. The act symbolises prosperity and the overflow of good fortune.

## NEWS

### British women Amantha and Sally seek Pongal virtue

Manorama writer

PUBLISHED: JANUARY 24, 2024 06:26 AM IST  
1 MINUTEREAD



Amantha and Sally, British women offering Pongal in front of Vitura Chayam Bhadrakali Temple.

ADVERTISEMENT

Interested in advertising in this spot? [Contact us](#)

British women tourists also offered pongala in front of Vitura • Chavam

Here is an excerpt of our newspaper feature in the local newspaper ‘Manorama’ – you can see me stirring the rice in the ‘pongall’ bowl, with Amanda in the background.

## Sally Druce



# **Save the Date!**

**Saturday 22nd June 2 - 4.30**

**Lillington Open Gardens  
including Plant Sale**

Join us for a day of beautiful gardens

**\*Cakes \*Tea \*Coffee**

**\*Refreshments\*Raffle**

**All within our lovely parish**

**Details to follow**

# Our Eco Church Bronze Award



Good news! St Mary Magdalene's has earned a Bronze Award for our care for God's creation. The national Eco Church scheme recognises achievement in five areas of church life: -

**Worship and teaching**  
**Management of church buildings**  
**Management of church land**  
**Community and global engagement**  
**Lifestyle**

At St Mary Mag's we regularly include prayers for the protection of the environment. We are making improvements with the energy consumption of our buildings, and over the past year have studied the heating aspects of our building with the support of an external agency, HeatHack. Our churchyard has a hedgehog habitat, bug hotels and flowers that are good for insects. We look forward to being a part of the wider community scheme to cover North Leamington with wonderful bright sunflowers.

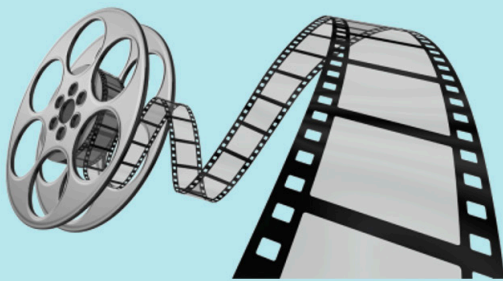
The creation story in Genesis describes a bright and wonderful creation. We all have a role to play to protect it; as individuals, as a church community and as a nation.

Conserving energy is crucially important in the face of a warming planet.

St James, Milverton, already have a Bronze award as do 67 other churches in Coventry Diocese. We now want to press on towards a Silver award so if you have any ideas or suggestions do get in touch.

Steve Hucklesby

---



# FILM NIGHT

**April's Film**

**Saturday 20th**

**at 6.00pm**

**Hidden Figures**



# Mary Mags Yarn Café

Dictionary Definition: Yarn

- *thread used for making cloth or for knitting;*
- *a story, usually a long one with a lot of excitement or interest (from which we get 'having a yarn, or having a chat')*

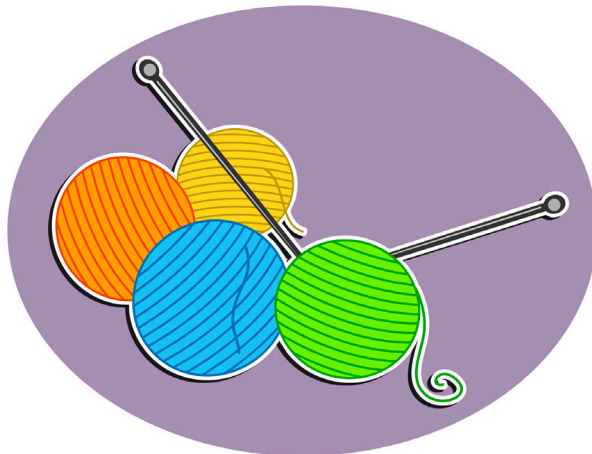


The knitting group is rebranding itself to be a Yarn Café, where you can knit, stitch, crochet, craft or just come and have a yarn. Perhaps you'd like to spend a couple of hours having a tea or coffee, reading a book, playing dominoes, or even just chatting to someone.

When: Second and Fourth Tuesday afternoons of each week, from 2-4pm

Where: The Octagon, St Mary Magdalene's Church, Vicarage Road, Lillington.

## Come along and have a yarn ...!



# Hire our Octagon!



**Are you looking for a venue?** The Octagon is a modern room built adjacent to the church. It can be hired at very competitive rates for small groups, meetings or parties. Please contact the church office on 01926 470449 for details.

---

## Rheams (Plumbing and Heating) Limited

T: (01926) 428 752 E: [info@rheams.co.uk](mailto:info@rheams.co.uk)

Family run business established in 1967

- GAS SAFE REGISTERED ENGINEERS
- 24 HOUR CALL OUT SERVICE, 7 DAYS A WEEK
- FREE INFORMATIVE CONSULTATIONS
- LARGE/SMALL SCALE RENOVATIONS
- NEW BUILDS
- BOILER REPLACEMENTS/REPAIRS
- (natural gas, LPG and commercial)
- LANDLORDS CHECKS
- POWERFLUSH SERVICE
- BATHROOM INSTALLATIONS
- ALL GENERAL PLUMBING

# What's happening

---

**Saturday 13<sup>th</sup> April  
from 10am**

**Coffee Morning in the Octagon**

**Saturday 20<sup>th</sup> April at  
6pm**

**Film Evening "Hidden Figures"  
— in the Octagon**

**Saturday 27<sup>th</sup> April**

**Bluebell Walk — Ryton Pools  
Country Park**

**Saturday 11<sup>th</sup> May  
from 10am**

**Coffee morning in the Octagon**

**Saturday 18<sup>th</sup> May**

**NO Film Evening  
Watch this space for a special  
event!**

---



# Join Us Online!

Did you know you can attend our church services online?

If you are unable to join us in-person due to illness, caring or travel, you can still join our weekly services. You can join us live if you are at home, or catch up later if you're otherwise engaged.

You can participate from anywhere in the world and from any time zone. We have regular virtual congregation members from Australia and Germany among others!

We stream our Sunday morning service live at 9.30am and our Wednesday morning service live at 10am. There are booklets on our website so you can follow the service.



You can join us via our website:  
[www.lillingtonparishchurch.org/streaming](http://www.lillingtonparishchurch.org/streaming)  
or follow us on Twitch:  
[www.twitch.tv/lillington\\_parish\\_church](https://www.twitch.tv/lillington_parish_church)



Do give it a go - you may be at home but you will feel like you are with us in person and we welcome your participation.

**Diana Taulbut**





# Join us at Star Church!

THIS IS WHAT OUR 11.15 SERVICE LOOKS LIKE

Join us for Star Church Worship every Sunday



**FUN \* LIVE BAND \* REFRESHMENTS \***  
**ACTIVE \* FAMILIES \* EVERYONE WELCOME**



**Parent and Toddler Group**  
**Thursdays 10.30am – 12.00noon**  
**in term-time**

**Octotots is an informal weekly  
get-together for babies, toddlers and  
their grown-ups held at  
St Mary Magdalene's church  
Vicarage Road, Lillington CV32 7RH**

**The sessions are FREE! and  
Refreshments are served throughout**

**Pick up a flier where the dates of our  
meetings are listed or contact the church  
office to find out more**

**01926 470449 – email**

**[lillingtonparishchurch@gmail.com](mailto:lillingtonparishchurch@gmail.com) or**

**check out our website :**

**[www.lillingtonparishchurch.org](http://www.lillingtonparishchurch.org)**

# Walkers Group

After an incredibly wet February, it was quite a struggle to find a suitable walk for March which did not end up in a quagmire of mud. However, on March 9th twelve of us set out on a bright morning from the Abbeyfields Hotel in Kenilworth walking up Fieldgate Lane past gardens full of spring flowers.

At the top of the Lane we crossed the road onto Hollis Lane, which would eventually lead us to the Kenilworth Greenway.

As we walked up the lane we passed the entrance to The Spring, a large house up a long drive surrounded



by trees. This was the home of Helen Martin who, until her identity was revealed after her death in 1988, was the anonymous donor of £28 million to Warwick University to fund, among other things, the flourishing Arts Centre on the campus. She was following a tradition of other owners of the house as a previous resident, William Evans, had helped to save the Abbey Fields when the Earl of Clarendon was trying to sell them to builders in the late nineteenth century.

After walking about a mile up Hollis Lane we reached the Greenway, a well-used track which follows the abandoned railway line between Kenilworth and Berkswell (though sadly this has been disrupted recently in several places by

the HS2 workings around Kenilworth and Berkswell). Once we had climbed up onto the track from the road we turned towards Kenilworth for a short distance before turning off to enter Crackley Wood, an ancient woodland now managed as a nature reserve by Warwickshire Wildlife Trust. We were pleased to find that the path we were following was well-maintained with very few muddy patches despite the days of rain and we could see the green leaves of bluebells beginning to push through the undergrowth with the promise of a carpet of blue to come in a few weeks.

Emerging on the other side of the wood, we followed the lane back to the Coventry Road before climbing our first stile into Parliament Piece. This is another small nature reserve off Upper Spring Lane on land also donated by Helen Martin in 1986 and is described on its website as ‘attractive open grassland (managed as a hay meadow) with impressively tall trees, old hedgerows and a pond’. The origins of its name are disputed, one theory, now largely discounted, being that Henry III held a parliament there in August 1266 during the siege of Kenilworth; the other theory, equally uncertain, is that Cromwell’s Parliamentary army camped there as they prepared to besiege Kenilworth Castle. Whatever its name’s origin, this was the soggiest part of our walk, but with careful navigation we managed to avoid the boggiest patches before climbing another stile onto Upper Spring Lane and then walking back down Fieldgate Lane to arrive at our starting point with generally dry feet.

We celebrated with a good lunch at the hotel!

**Caroline Carr**

Dear Friends,

I hope you are enjoying this month's issue of Crosstalk. We aim to provide interesting and informative articles for you to enjoy, and to this end invite you to contribute towards your Parish magazine.

Have you got a story to tell? We'd love to know your faith story – how did you come to God? Or perhaps you'd like to tell us about an amusing situation which happened to you, or about a cause which is dear to your heart.

Please send articles to me, Alex at:

**[crosstalkeditor@gmail.com](mailto:crosstalkeditor@gmail.com)**

by Weds 17th April (May issue)  
or Weds 15th May (June issue)

If you have any questions or have an idea for an article but are unsure what to write, please speak to Sara Snatt [sazzysnatt7@icloud.com](mailto:sazzysnatt7@icloud.com) or Gaynor Cook [gaynormail@btinternet.com](mailto:gaynormail@btinternet.com).

Thanks and I look forward to hearing from you!

**Alex Robinson**



The  
Tale of the  
**TWO  
BUILDERS**



**JESUS OFTEN TOLD  
STORIES WITH  
HIDDEN MEANINGS**



**ONE WAS ABOUT TWO MEN WHO  
BUILT THEIR OWN HOUSES**



**THE FIRST BUILDER SEARCHED HIGH  
AND LOW FOR A GOOD SOLID ROCK ON  
WHICH TO BUILD HIS HOME.**

**AT LONG, LONG LAST HE  
FOUND THE IDEAL SPOT.**



**SO HE BEGAN TO BUILD.**

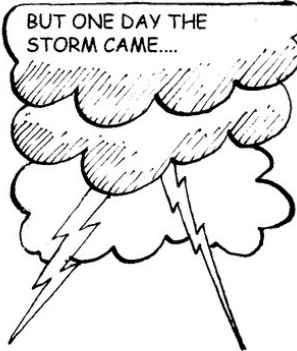


**THE OTHER BUILDER  
DIDN'T CARE WHERE HE  
BUILT HIS HOUSE**

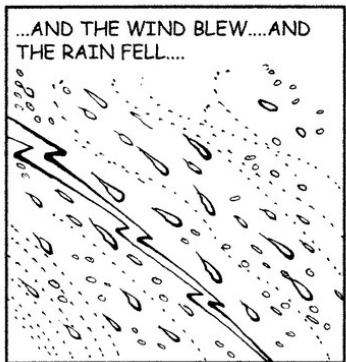
**HE THOUGHT SOME NICE FLAT SAND  
WOULD BE AN EASY PLACE TO BUILD.**



**BUT ONE DAY THE  
STORM CAME...**

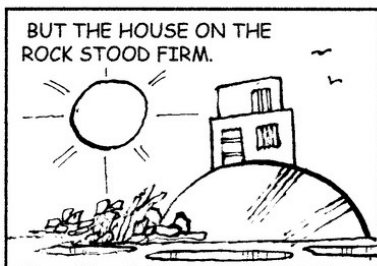


**...AND THE WIND BLEW...AND  
THE RAIN FELL....**



**...AND THE HOUSE ON  
THE SAND COLLAPSED!**

**BUT THE HOUSE ON THE  
ROCK STOOD FIRM.**



**JESUS EXPLAINED -  
IT'S IMPORTANT OUR LIVES HAVE  
A FIRM FOUNDATION.**

# Help to keep our magazine going!

If you have enjoyed reading this issue of Crosstalk and you are able to, please consider donating a small amount to help with our running costs.

## Donate cash

In church - look out for the donation box and mark your cash with 'Crosstalk'

## Donate via bank transfer or cheque

Our church bank details are:

Bank: HSBC

Account Name: Lillington PCC

Sort Code: 40 27 06

Account Number: 91308580

Reference: CROSSTALK



Thank you for all you are able to give.



**Lillington Parish  
Church**





# ECO TIP!

Fit more active travel into your day and daily routine. Reevaluate your journeys: explore walking or cycling options, or modify your route to include some form of active travel, i.e. disembark a stop early and complete the remaining part of your journey on foot, indulge in a leisurely stroll, or opt for a bike ride along a cyclist-friendly route. Consider connecting with your local Ramblers or cycling group for shared experiences. Use the extra steps or the changed travel arrangements as a prompt to pray for God's creation, nature's preservation and the reduction in fossil fuel usage.



**Telephone Works**  
**Don Gruettner**  
T: 01926 311673  
M: 07525 357348  
*E: don.gruettner@btinternet.com*

- ✓ Residential telephone engineer
- ✓ Additional sockets for phones & computers
- ✓ Internal & external cables relocated/tidied
- ✓ Telephone extension sockets for Sky digiboxes/Sky+
- ✓ Internal cable faults
- ✓ ADSL activation faults

*Former B.T. Engineer with 22 years experience*

**Phil Edwards**  
**Handyman Services**  
**General Handy Man**  
**NO JOB TOO SMALL!**



Whatever you need doing, a dripping tap, some shelves putting up, gutters cleaning, or the garage clearing out, give me a call.

Home: 01926 424485  
Mobile: 07931 812235  
e-mail: [philedwardsramg@gmail.com](mailto:philedwardsramg@gmail.com)

# Services in April

|          |          |                             |  |
|----------|----------|-----------------------------|--|
| 7 April  | Easter 2 | 9.30am<br>11.15am<br>6.00pm | Holy Communion (in church & on line)<br>All Age Communion (in church)<br>Evening Service (in church) |
| 14 April | Easter 3 | 9.30am<br>11.15am           | Shortened Holy Communion (in church & on line)<br>Star Church (in church)                            |
| 21 April | Easter 4 | 9.30am<br>11.15am           | Holy Communion (in church & on line)<br>Star Church (in church)                                      |
| 28 April | Easter 5 | 9.30am<br>11.15am           | Holy Communion (in church & on line)<br>Star Church (in church)                                      |

## Weekday Services in April

**Wednesdays** Holy Communion **in church** and online at 10.00am on 3, 10, 17 & 24 April

From the church records (February)

**BAPTISMS: None**

**WEDDINGS: None**

**FUNERALS: David Moore**



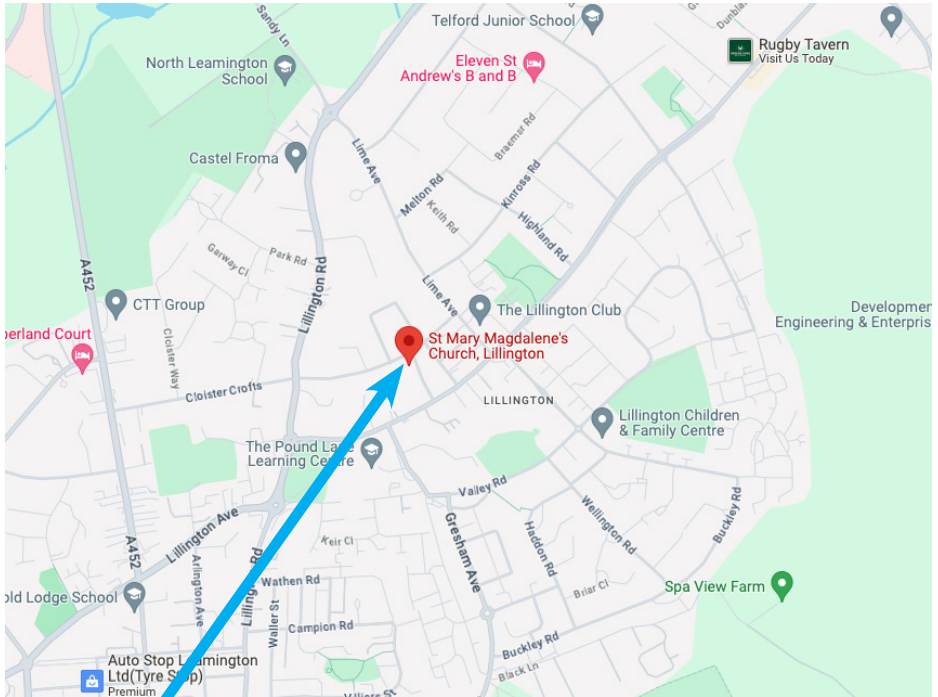
**Services are streamed live**  
and are also available afterwards on the website  
[www.lillingtonparishchurch.org](http://www.lillingtonparishchurch.org)

**For Funeral, Baptism and Wedding enquiries,**  
please contact Rev. William Smith on 01926 316475  
or email [wms.smith@btinternet.com](mailto:wms.smith@btinternet.com)

**For general enquiries** please contact the church  
office by telephone on 01926 470449 or email  
[office@lillingtonparishchurch.org](mailto:office@lillingtonparishchurch.org). Outside of office  
hours, please leave a message on the answer phone  
and we will return your call.



# FIND US



**We are on the corner of Church Lane and  
Vicarage Road in Lillington!**

**For directions, use Google Maps or email  
[office@lillingtonparishchurch.org](mailto:office@lillingtonparishchurch.org)**

# CONTACT US

**Please do contact us with any questions or queries, or just to say hello!**



## **Church Office & General Enquiries**

Wendy Driscoll

[office@lillingtonparishchurch.org](mailto:office@lillingtonparishchurch.org)

01926 470449

*The Church Office is normally open 9:30am to 1pm,  
Monday, Tuesday and Thursday*

## **Vicar**

Rev William Smith

01926 316475

## **Churchwardens**

Sally Druce

[sally.druce1@gmail.com](mailto:sally.druce1@gmail.com)

07933 295350

Graham Cooper

[grahamx.cooper@tiscali.co.uk](mailto:grahamx.cooper@tiscali.co.uk)

01926 426942

## **Love Lillington**

Christine Butler

[j.butler1christine@gmail.com](mailto:j.butler1christine@gmail.com)

07963 229756



**Follow us on Facebook!**

[facebook.com/LillingtonParishChurch](https://facebook.com/LillingtonParishChurch)



**CHRIST**

has died



**CHRIST**

has risen



**CHRIST**

will come again

